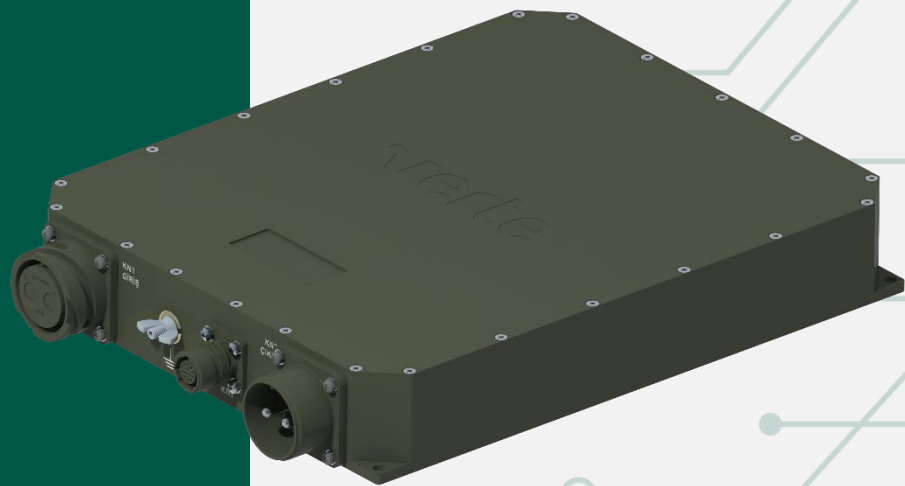


MILITARY CONVERTER

MCON-9T36-28-2K-A01

MCON-9T36-28-2K-A01 is designed to convert a wide input voltage range of 9 to 36VDC into a regulated 28VDC output. It delivers up to 2kW of continuous power and is suitable for military applications where space, weight, and reliability are critical.

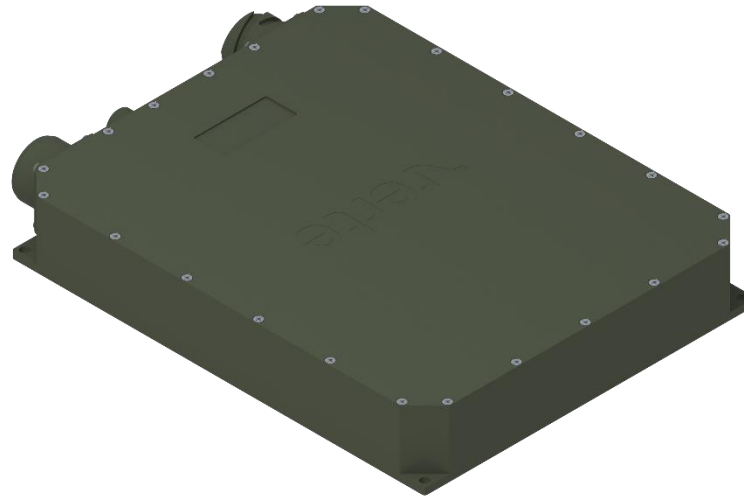
- Wide input voltage range 9 to 36 VDC
- Reverse Voltage Protection
- Over Current Protection
- Over Voltage Protection
- Over Temperature Protection
- Paralleling feature
- Conduction cooling without fan
- IP67
- Build In Test function
- RS485/CAN interface
- MIL-STD-810 Compliance
- MIL-STD-1275 Compliance



verte

2kW DC-DC Converter, engineered to meet the rigorous demands of military and defense applications. Designed to operate within a wide input range of 9 to 36VDC, this converter delivers a stable and precise 28VDC output, ensuring reliable power delivery in the most challenging environments.

Built for durability and efficiency, this non-isolated converter features advanced thermal management, compact form factor, and robust EMI performance. Whether integrated into ground vehicles, tactical communication systems, or unmanned platforms, it provides mission-critical power with unmatched stability.



The converter features CAN and RS485 communication interfaces, enabling users to monitor system status and receive key information such as input/output voltage, current, and fault conditions. It includes overvoltage and overcurrent protection for enhanced operational safety. The output voltage is highly stable, maintaining regulation even under varying load and input conditions. Its fast transient response ensures reliable performance during sudden load changes, making it well-suited for demanding military and industrial power systems.

